



# ZANUS

*PRODUCTION ROBOTICS*



**Pauli**



**PauliB**

**Pan Tilt Heads**

## Key features

- Multiple ways of control
- Cost-effective
- Wide speed range
- Up to 100 advanced presets
- Very quiet
- Lightweight modern L-shape design



### Pauli

- Ideal for productions where minimum cabling is required
- AC power supply
- Output voltage for camera supply pass through the Pan axis
- SDI pass through the Pan axis
- Ethernet pass through the Pan axis



### PauliB

- More compact
- More lightweight
- Cost effective
- It can make multiple turns in the Pan axis
- Does not have the base
- Does not have cable pass through

## Wide speed range with smooth camera motion and possibility to adjust

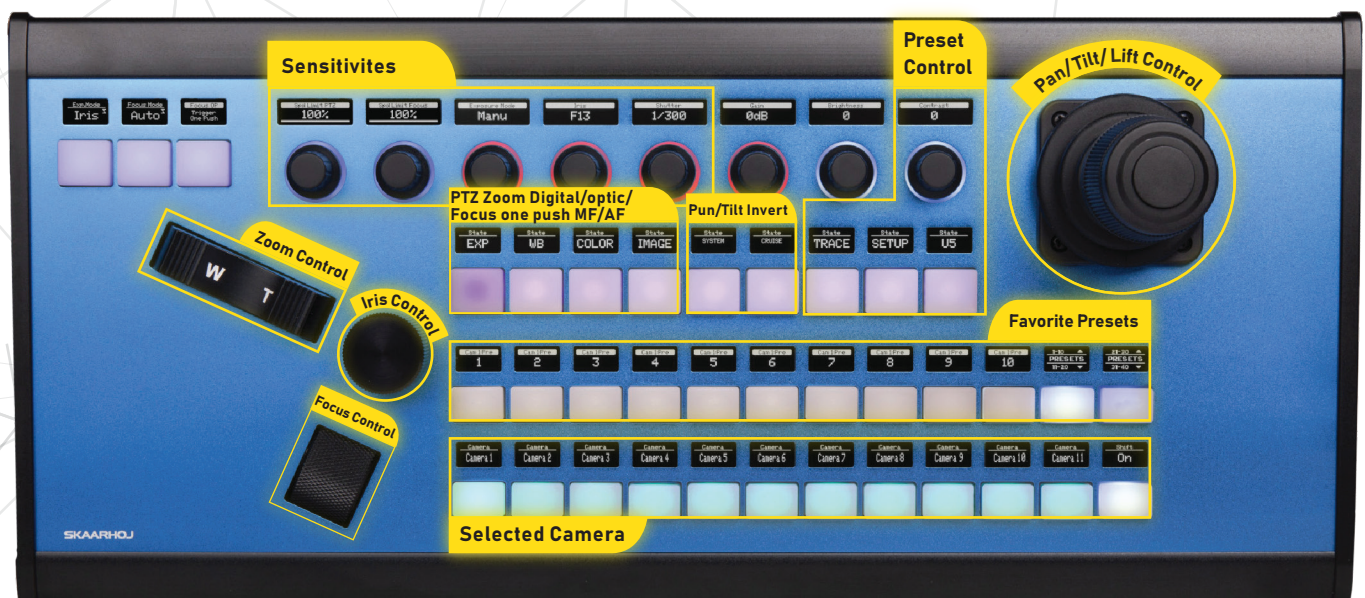
Pauli/PauliB has tight speed control for both pan and tilt axes in the range from 0.001°/s (4 days for a full rotation) up to 180°/s (2 seconds for a full rotation). Limits on acceleration and jerk can be adjusted in order to choose between a very smooth or aggressive head motion on an ultra-fine scale.

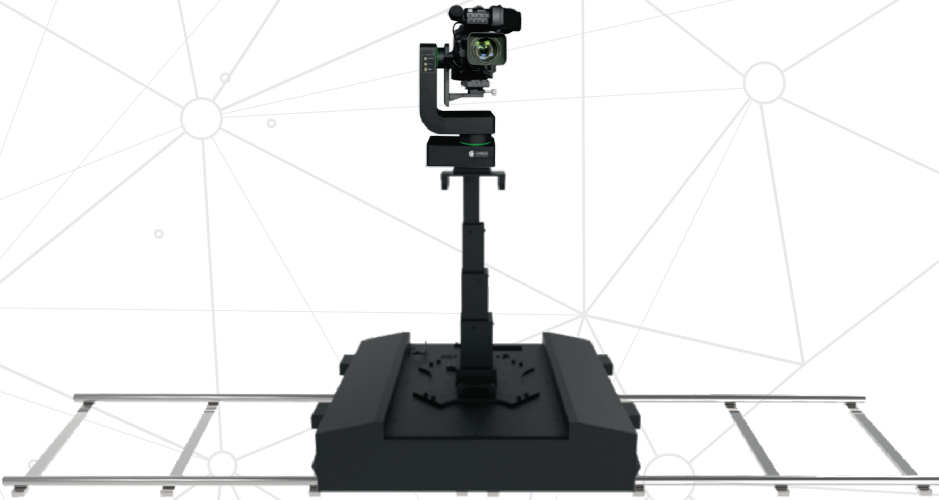
Pauli can be fully exploited in a great variety of productions, ranging from a wide-angle-sports shooting with fast movements to ultra-fine and slow motion with a large telephoto lens.

## Multiple control interfaces

Pauli/Pauli B can be controlled in several ways, which makes it very easy to use. Control app is implemented on the head and it can be opened from any computer, tablet, smartphone, or similar device without the need to install any additional software. There is an option of joystick control with a great variety of different joysticks (any joystick with VISCA over IP, Skaarhoj configurable joystick, and more).

Additional option is control through Zanus RoboProd advanced production robotics control software which allows for complete robotic control over: Pan, Tilt, Zoom, Focus, Iris, Pedestal (Raise), Dolly (Move) simultaneously from single operator console. Pauli is built for automation and its advanced communication protocol allows easy integration into automatic production workflows.





## Easy control and modularity

A single operator can control multiple heads from a unique control point if they are connected into the same local network. It is very easy to mount the head on motorized pedestal or dolly and control it as a single unit.



## Advanced preset options

Run (execute preset with maximal allowed speed) and play (execute preset in a given time) options for up to 100 presets are available. Moreover, an array of presets with arrival times can be automatically executed. There is full flexibility in combining presets and manual control - simultaneous execution of presets in some axes and manual control in other. Activating a new preset while the previous one is executing, with automatic recalculation for a smooth transition, is an easy task for Pauli. An additional option is to change the preset arrival time while the preset is being executed.

### Stream

Stream from the currently active camera for easy control and easy preset generation.

### Multi preset

Multi preset allows you to create and recall a preset value for several cameras at the same time.

### Preset database

Preset database allows for custom organization and advanced search of presets. This solution can be very useful for systems with a large number of preset values (such as parliament or similar).

### Preset array

Preset array is an option that allows defining several preset settings that will be executed consecutively in defined time frames (even for different cameras or for multiple cameras).

Various lens control options with Fujinon and Canon control interfaces, interface for external follow focus motors, LANC interface and XC protocol for Canon cameras are present on the head.



### Canon Cine Servo Lenses

PL mount (full frame or super 35)  
EF mount (full frame or super 35)

### Canon Broadcast Lenses

B4 mount (2/3")



### Fujinon Broadcast Lenses

B4 mount (2/3")



### LANC

Local Application Control Bus System

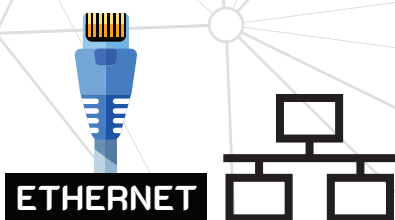
- Sony, Canon, JVC and Panasonic prosumer camcorder lenses
- Some Sony digital cinema cameras



### External lens motor

PDmovie are used on the following cameras:

- Digital cinema cameras - cine lenses
- Prosumer cameras - lens with an infinity focus and zoom ring



### Canon XC

Ethernet protocol that enables control camera lenses (zoom, focus, iris) and camera menu via LAN input for the following cameras:

EOS C500 mark 2  
EOS C300 mark 3  
EOS C70  
EOS XF 605

Pauli and PauliB support easy and adaptable mounting, with the possibility for reverse and 90° mounting.



Quiet operation at 40 dB is offering a very comfortable surrounding for any kind of event.



Pauli makes cabling easy with 2 SDI, Ethernet and camera power cables pass through the pan axes.

In addition, AC power supply with locking connector makes powering the head easier and safer.



PauliB does not have the base nor cable pass trough. It is supplied by 12V DC power (power brick provided with the head).

However, it is more compact than Pauli and offers possibility for multi turn motion in pan axis.

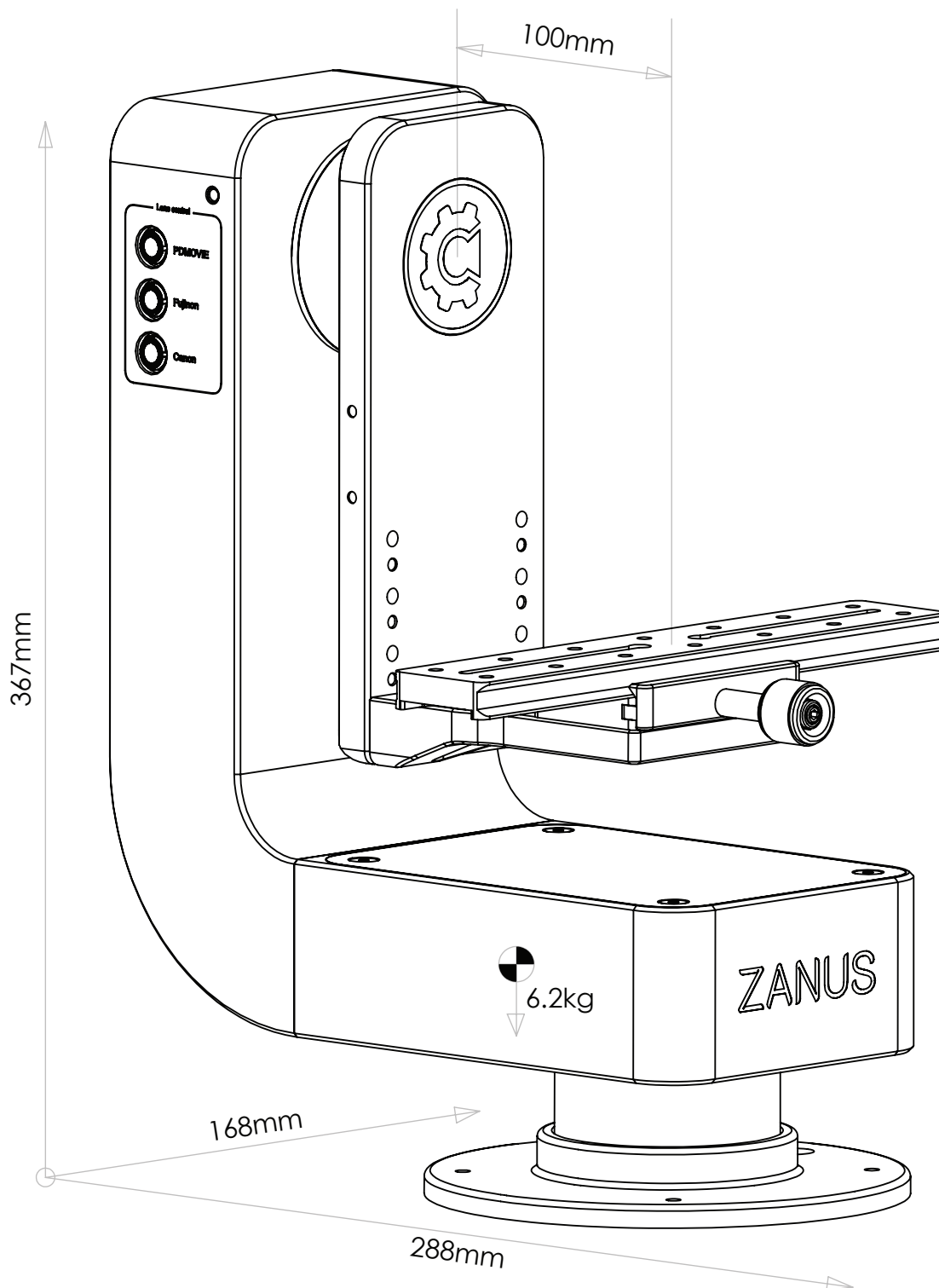


Considerable payload of 20kg with the head weight of only 8.4kg for Pauli and 6.2kg for PauliB, enables mounting of large and heavy cameras even with a teleprompter, while allowing easy transport of the head.

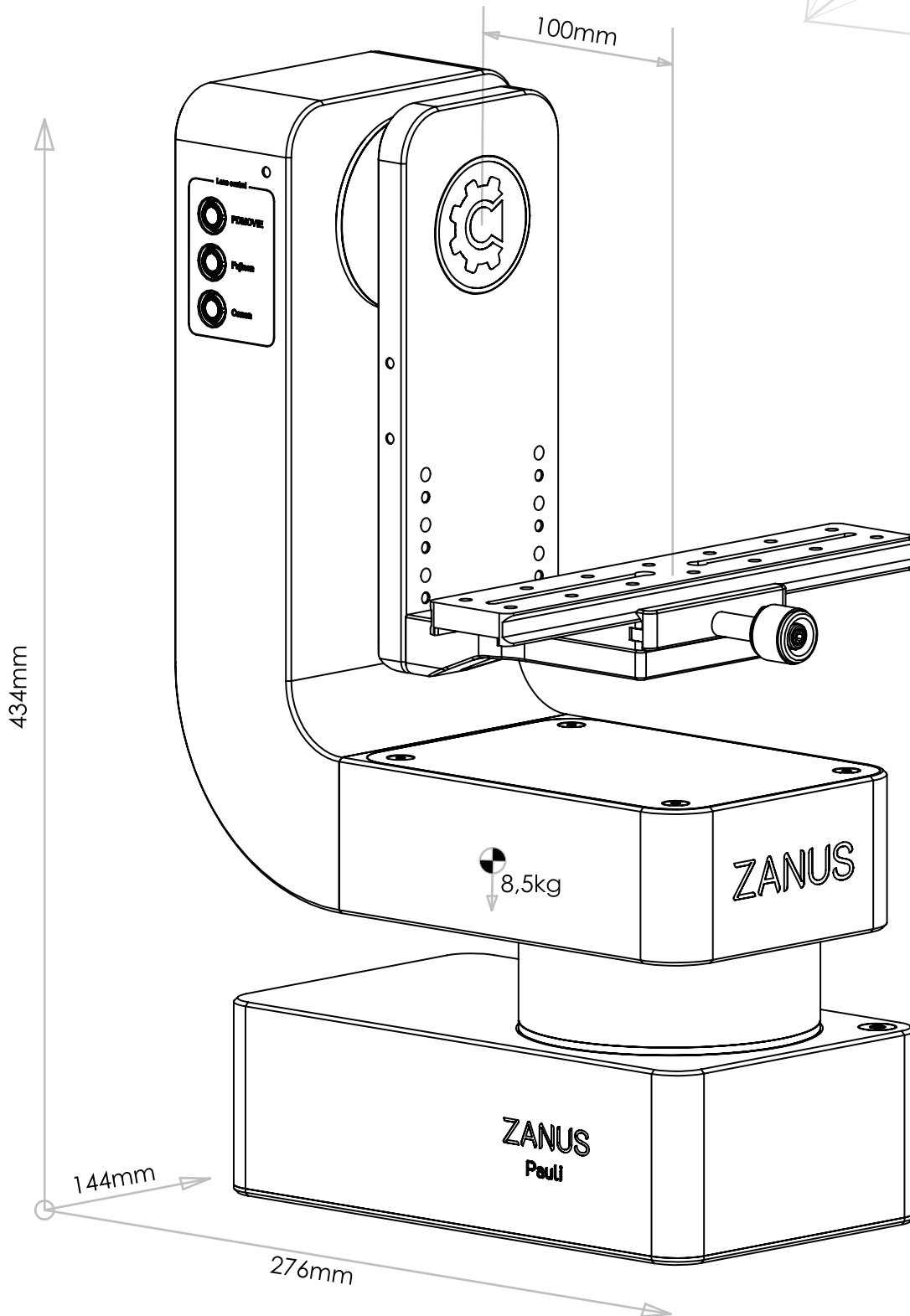


	Pauli	PauliB
Camera payload	20 kg	
Weight	8.4kg	6.2kg
Dimensions	434x276x144mm	367x288x167mm
Pan angle	± 175°	± 360° (multi turn)
Tilt angle	± 180°	
Pan speed	0.001 – 180°/s	
Tilt speed	0.001 – 180°/s	
Acceleration	90°/s <sup>2</sup>	
Presets	Preset play/run, preset array, maximum 100 points, preset in some axes and manual control in others possible	
Temperature operating range	-10° to 45°	
Power requirements	100-240VAC	12VDC, 5A
Connectors (audio, video)	2 SDI co-ax pass trough	None
Connection	IP Ethernet	
Noise level	40 dB	
Communication connectors	CAN connector for interface with Zanus pedestal and dolly	
	Ethernet switch in the head with ethernet connection for the camera	None
Power output connectors	12VDC, 60W D-tap and XLR	None
Zoom, Focus, Iris control	Interface for Canon and Fujinon lenses, interface for PD Movie external lens motors, LANC & Panasonic analog, Canon XC protocol	
Mounting	Standard tripod mount with half ball, reverse mount possible, 90° wall-mount with adapter possible	
Protection class	IP52	
Shot recall repetability	± 0.025°	

# PauliB



# Pauli





# ZANUS

*PRODUCTION ROBOTICS*

Being so precise, easy to control, quiet, and affordable, Pauli and PauliB are ideal for your future productions.

[www.zanusrobotics.com](http://www.zanusrobotics.com)  
[info@zanustechnology.com](mailto:info@zanustechnology.com)